



# PRODUCT DATA

## Trailer Safety Kit – Black

Page 1 of 3

Tow loads securely with the trailer safety kit, which includes two hooks and two links suitable for trailers up to 3.5T Aggregate Trailer Mass (ATM). Have confidence in kits that are harder to steal than Dee Shackles and improve efficiency by simply clipping over the hook gate.

### Applications

- Towing
- Easy hitching of safety chains to trailers and caravans

### Material



### Finish



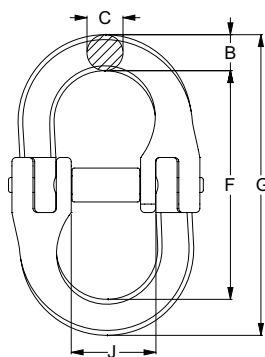
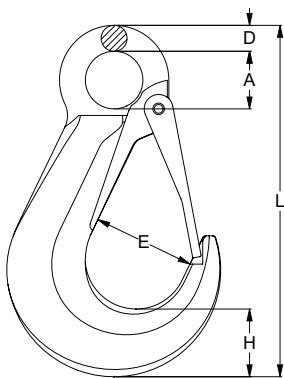
### Features

- Includes 2x hooks and 2x links
- Conforms to AS/NZS 3776
- 100% magnaflux crack detection
- Safety hook prevents components from releasing



Part	QFind	Size	Dimensions									
			A (mm)	D (mm)	E (mm)	H (mm)	L (mm)	C (mm)	B (mm)	F (mm)	G (mm)	J (mm)
UT-KHKCL08B-06	UTK6	6	20.0	9.0	22	20.5	122.0	7.0	7.5	42.0	58.0	15.0
UT-KHKCL08B-08	UTK8	8	25.5	11.5	26	23.5	138.5	8.5	9.5	60.5	79.5	20.5

Part	Minimum Breaking Load
UT-KHKCL08B-06	4.5T. Suitable for trailers up to 2.0T Aggregate Trailer Mass (ATM)
UT-KHKCL08B-08	8.0T. Suitable for trailers up to 3.5T Aggregate Trailer Mass (ATM)

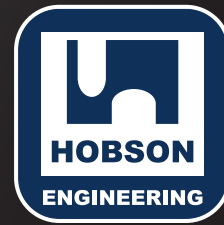


Disclaimer: while every reasonable effort has been made to ensure that this document is correct at the time of printing, Hobson Engineering®, its agencies and employees disclaim all liability in respect to anything or the consequences of anything done or omitted regarding the whole or any part of this document. HEC product marking is the manufacturing mark of Hobson Engineering. HEC is a registered trademark of Hobson Engineering.

Bolt Tension | Anti-Vibration | Product Reliability | Traceability

**hobson.com.au** **QUALITY FASTENERS SINCE 1935**

# PRODUCT DATA



## Trailer Safety Kit – Black

Page 2 of 3

### Installation Guide



**Step 1.** Place the first half of the link through the hitch point on either side of the tow bar.



**Step 2.** Place the other half of the link through the eye of the hook.



**Step 3.** Bring the two halves of the links together and partially insert locking pin to hold the parts together.



**Step 4.** Insert the locking collar with the recessed side facing the pin and push the pin in until it holds the collar in place.



**Step 5.** Using a hammer, tap the pin through the collar until it emerges on the other side of the links.



When using two chains, repeat the process on the other hitch point of the tow bar.

Disclaimer: while every reasonable effort has been made to ensure that this document is correct at the time of printing, Hobson Engineering®, its agencies and employees disclaim all liability in respect to anything or the consequences of anything done or omitted regarding the whole or any part of this document. HEC product marking is the manufacturing mark of Hobson Engineering. HEC is a registered trademark of Hobson Engineering.

Bolt Tension | Anti-Vibration | Product Reliability | Traceability

**hobson.com.au** **QUALITY FASTENERS** SINCE 1935



2503.06DS

# PRODUCT DATA



## Trailer Safety Kit – Black

Page 3 of 3

### Trailer Safety Kit Compliance

The connection between a vehicle and trailer is covered in Australia by Australian Design Rule 62 (ADR 62) - Mechanical Connections between Vehicles.

Safety Chains (and related attachments) for towbars with a rated towing capacity of up to 3.5 tonnes Aggregate Trailer Mass (ATM) must comply with the requirements of AS 4177.4 - Caravan and light trailer towing components, Part 4: Safety chains up to 3500kg capacity.

AS 4177.4 designates a chain size of 2,500kg for trailers with an ATM up to 2,500kg and 3,500kg for trailers with an ATM up to 3,500kg. These chain sizes require minimum proof and breaking loads as follows:

Trailer ATM (kg)	Chain Size	Proof Load (kN)	Min. Breaking Load (kN)
Up to 2,500kg	2,500kg (4177-25)	12.3	36.9
Up to 3,500kg	3,500kg (4177-35)	17.2	51.6

The proof load requirements for the chain are approximately half of the chain rating whilst the minimum breaking load is one and a half times the chain rating.

The Hobson Engineering trailer safety kits consist of parts that comply with AS/NZS 3776 and when tested as an assembly have minimum breaking loads as follows:

Part	Description	Min Breaking Load	Required minimum	Compliance
UT-KHKCL08B-06	Grade 80 Tow Safe Kit: 6mm	43.95kN	36.9kN	Complies
UT-KHKCL08B-08	Grade 80 Tow Safe Kit: 8mm	78.48kN	51.6kN	Complies

The minimum breaking strength of the trailer safety kit exceeds the minimum breaking requirement for the required safety chain for the trailer and therefore complies with the requirements of ADR 62/02. Test certificates for all components in the kit are available from [www.hobson.com.au](http://www.hobson.com.au)

Disclaimer: while every reasonable effort has been made to ensure that this document is correct at the time of printing, Hobson Engineering®, its agencies and employees disclaim all liability in respect to anything or the consequences of anything done or omitted regarding the whole or any part of this document. HEC product marking is the manufacturing mark of Hobson Engineering. HEC is a registered trademark of Hobson Engineering.

Bolt Tension | Anti-Vibration | Product Reliability | Traceability

[hobson.com.au](http://hobson.com.au) **QUALITY FASTENERS SINCE 1935**



250306DS