

## MIT-Hybrid Plus Mortar for highest performance in concrete

HOBSON Part prefix: MUCMTHYP <<



European Technical Approval Option 1 for cracked and non-cracked concrete with anchor rod and with rebar used as anchor



Fire resistance test certification  
F30-F120 (Rebar)





VOC FREE according to Swiss legislation and certified A+ according to DEVL 1101903D / DEVL 1104875A



The anchor may also be used under seismic influence for performance category C1 + C2 (M12-M30)



Application also in damp and water-filled drill holes

					M12 110mm Anchor Embedment	M16 125mm Anchor Embedment	M20 170mm Anchor Embedment	M24 210mm Anchor Embedment
Product:	ETA Assessment Cracked Concrete	Cartridge Volume	SATS 101: 2015 Compliant Now AS 5216	Full Cure Time @ 20 °C Dry Concrete	Design Tensile Capacity (kN) (N <sub>sd</sub> )	Design Tensile Capacity (kN) (N <sub>sd</sub> )	Design Tensile Capacity (kN) (N <sub>sd</sub> )	Design Tensile Capacity (kN) (N <sub>sd</sub> )
 MIT-Hybrid		400ml	YES	30 min	44.6	66.5	87.7	120.7

Note: The above information has been derived from manufacturers relevant independent European Approvals. Calculations have been determined following ETAG 01 and TR029. Design Tensile Capacity is based on a single Class 8.8 threaded stud anchor in a hammer drilled, dry hole remote from an edge in 40MPa uncracked concrete. Performance based on maximum long term temperature of 50 °C. Please contact Hobson's technical engineering department for specific design applications. Seismic Assessment must be completed using the Mungo Software.



### Mungo Design software ready for download!

Whether you need anchor calculations for a complex project or on site recommendations including pull out tests - we work together with you to define and optimise fixing solutions.

- User-friendly look and feel
- Optional user prompting and helpful reminders for missing information serve to reduce familiarisation time to a minimum
- The data can be edited either directly in the graphic or in the provided data fields
- Multilingual user interface
- Contact details of companies can be saved to enable these to be used again in subsequent projects
- Online updates: a download of the entire installation package is not necessary when enhancements are released

ONLINE  **FREE** Design software download: [hobson.com.au/mungo-software](http://hobson.com.au/mungo-software)

**hobson.com.au** **QUALITY FASTENERS SINCE 1935**



## MIT-Hybrid Plus Mortar for highest performance in concrete

HOBSON Part prefix: MUCMTHYP <<



Compliant with National Construction Code (NCC) and AS 5216 – Formerly SA TS 101 (2015)



**MIT-Hybrid Plus**

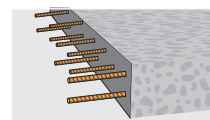
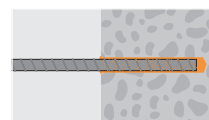
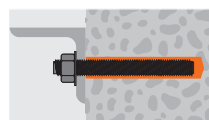
### Feature

- European Technical Assessment Option 1 for cracked and non-cracked concrete with anchor rod and with rebar used as anchor
- Assessment of resistance under **fire exposure F30-F120**
- European Technical Assessment for post-installed rebar connections
- Assessment of resistance under **fire exposure F30-F120 (Rebar)**
- The anchor may also be used under **seismic** influence for performance category C1 + C2 (Option 1)
- VOC FREE according to Swiss legislation and certified A+ according to DEVL 1101903D / DEVL 1104875A
- LEED - Test Report
- Automatic hole cleaning with the innovative 2in1 Hollow Drill Bit (part of the assessment)
- Highest productivity
- Certification for drinking water systems
- High loads
- Fast curing
- Variable setting depth
- Dry, wet and **water-filled drill holes**
- Suitable for overhead fixings
- Styrene free and low odour
- Colour of mortar: grey
- Indoor (zinc plated) and outdoor (stainless steel) applications



### Applications

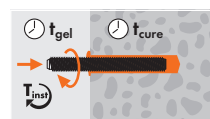
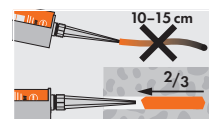
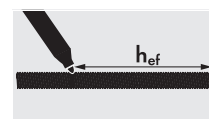
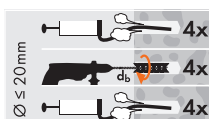
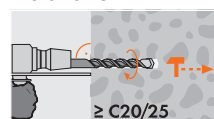
steel constructions, wooden constructions, façades, façade scaffolds, railings, high-racks, machines, staircases, ladders, cable trays, canopies, hand-rails, consoles



### Temperatures

	-5÷-1°C	0÷4°C	5÷9°C	10÷14°C	15÷19°C	20÷29°C	30÷40°C
Working time, in minutes (t <sub>gel</sub> )	50	25	15	10	6	3	2
Curing time, dry in minutes (t <sub>cure</sub> )	5 h	3.5 h	2 h	1 h	40	30	30
Curing time, wet in minutes (t <sub>cure</sub> )	10 h	7 h	4 h	2 h	80	60	60

### Installation



ONLINE  **FREE** Design software download: [hobson.com.au/mungo-software](http://hobson.com.au/mungo-software)

**hobson.com.au** **QUALITY FASTENERS SINCE 1935**

