



PRODUCT DATA

316 Countersunk Coach Screw

Coach Screw – Gimlet point, countersunk for flush finish.

Applications

- For use into timber as base material
- Fencing, brackets, hinges, timber decking, landscaping and retaining walls
- Can be used with wall plugs for connections into concrete and brick
- Other timber connections

Material

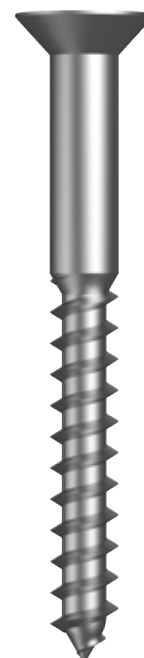


316 Stainless

Finish

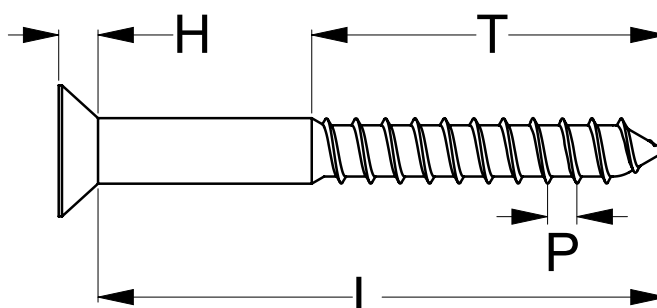
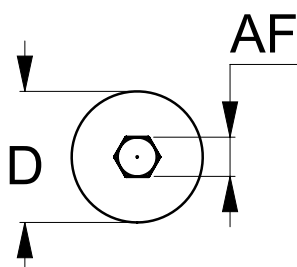


316 Stainless



Part	Size	Pre-drilled hole (Softwood)	Pre-drilled hole (Hardwood)	Length	Thread Length	Head Ø	Head Height	Thread Pitch	Drive Size (Hex)	Pack Qty
		Dia Ø (mm)	Dia Ø (mm)	L (mm)	T (mm)	D (mm)	H (mm)	P (mm)	AF (mm)	
SC16PLM080100	M8	4	6.0	100	60	16	4.4	3.6	5	100
SC16PLM080140	M8	4	6.0	140	84	16	4.4	3.6	5	100
SC16PLM100100	M10	5	7.5	100	60	20	5.5	4.5	6	50
SC16PLM100140	M10	5	7.5	140	84	20	5.5	4.5	6	50

Note: These screws are not self-drilling. Pre-drilling into timber is required to serve as a pilot hole. Pre-drilled hole sizes are determined by the type of timber as shown in the table above.



Disclaimer: While every reasonable effort has been made to ensure that this document is correct at the time of printing, Hobson Engineering®, its agencies and employees, disclaim any and all liability to any person in respect of anything or the consequences of anything done or omitted to be done in reliance upon the whole or any part of this document.

Bolt Tension | Anti-Vibration | Product Reliability | Traceability

hobson.com.au **QUALITY FASTENERS SINCE 1935**