



PRODUCT DATA

ESL Dual Slot Self Lock Nut


J. LANFRANCO

LOCKNUTS FOR CRITICAL BOLTED JOINTS

NFE 25 411

Applications

- Mining and Processing
- Railway and Transportation
- Energy
- Military
- Industrial

Features

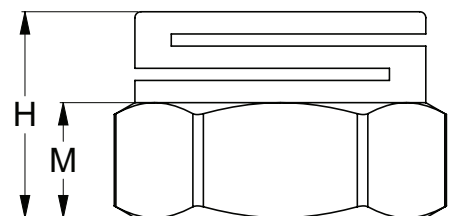
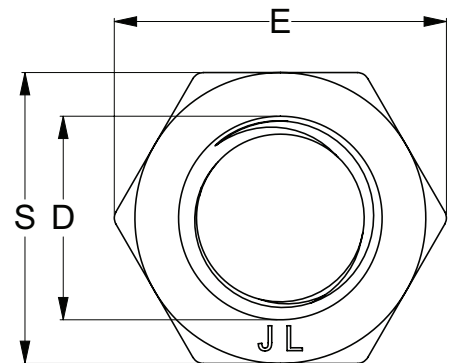
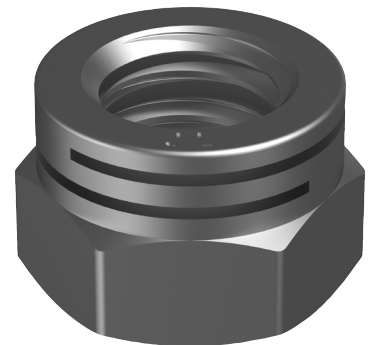
- Extremely reliable
- Consistant prevailing torque
- No Galling
- Locking slots independent of bolt tension

Material


A2-70

Finish


304 Stainless



Part	D	pitch	H	M	S	E
		(mm)	(mm)	(mm)	(mm)	(mm)
NJ04PESLM06	M6	1.00	7.00	3.60	10.00	11.05
NJ04PESLM08	M8	1.25	8.80	4.80	13.00	14.38
NJ04PESLM10	M10	1.50	11.00	6.00	16.00	17.77
NJ04PESLM12	M12	1.75	13.00	7.20	18.00	20.03
NJ04PESLM16	M16	2.00	18.70	11.50	24.00	26.75
NJ04PESLM20	M20	2.50	21.00	12.00	30.00	32.95
NJ04PESLM24	M24	3.00	25.50	15.40	36.00	39.55

Disclaimer: While every reasonable effort has been made to ensure that this document is correct at the time of printing, Hobson Engineering®, its agencies and employees, disclaim any and all liability to any person in respect of anything or the consequences of anything done or omitted to be done in reliance upon the whole or any part of this document.

Bolt Tension | Anti-Vibration | Product Reliability | Traceability

hobson.com.au **QUALITY FASTENERS SINCE 1935**