



# PRODUCT DATA

## ESL Dual Slot Self Lock Nut


**J. LANFRANCO**

LOCKNUTS FOR CRITICAL BOLTED JOINTS

NFE 25 411

### Applications

- Mining and processing
- Railway and transportation
- Energy
- Military
- Industrial

### Features

- Extremely reliable
- Consistant prevailing torque
- No galling
- Locking slots independent of bolt tension

### Material

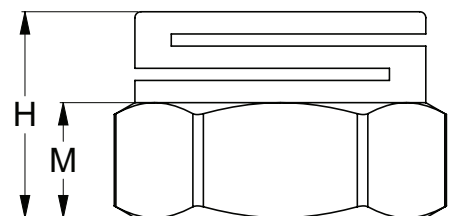
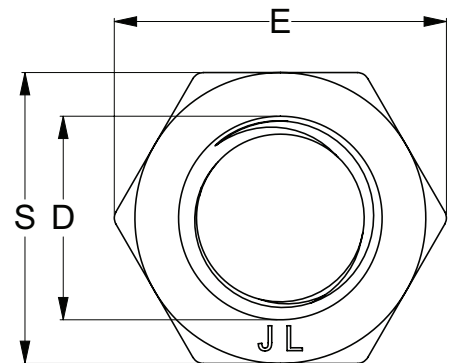
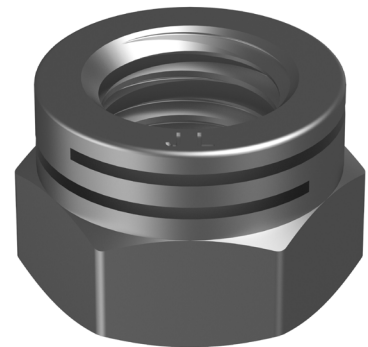


A4-80

### Finish



316 316 Stainless



Part	D	Pitch	H	M	S	E
		(mm)	(mm)	(mm)	(mm)	(mm)
NJ16NESLM06	M6	1.00	7.00	3.60	10.00	11.05
NJ16NESLM08	M8	1.25	8.80	4.80	13.00	14.38
NJ16NESLM10	M10	1.50	11.00	6.00	16.00	17.77
NJ16NESLM12	M12	1.75	13.00	7.20	18.00	20.03
NJ16NESLM16	M16	2.00	18.70	11.50	24.00	26.75
NJ16NESLM20	M20	2.50	21.00	12.00	30.00	32.95
NJ16NESLM24	M24	3.00	25.50	15.40	36.00	39.55

Disclaimer: while every reasonable effort has been made to ensure that this document is correct at the time of printing, Hobson Engineering®, its agencies and employees disclaim all liability in respect to anything or the consequences of anything done or omitted regarding the whole or any part of this document.

Bolt Tension | Anti-Vibration | Product Reliability | Traceability

**hobson.com.au** **QUALITY FASTENERS SINCE 1935**